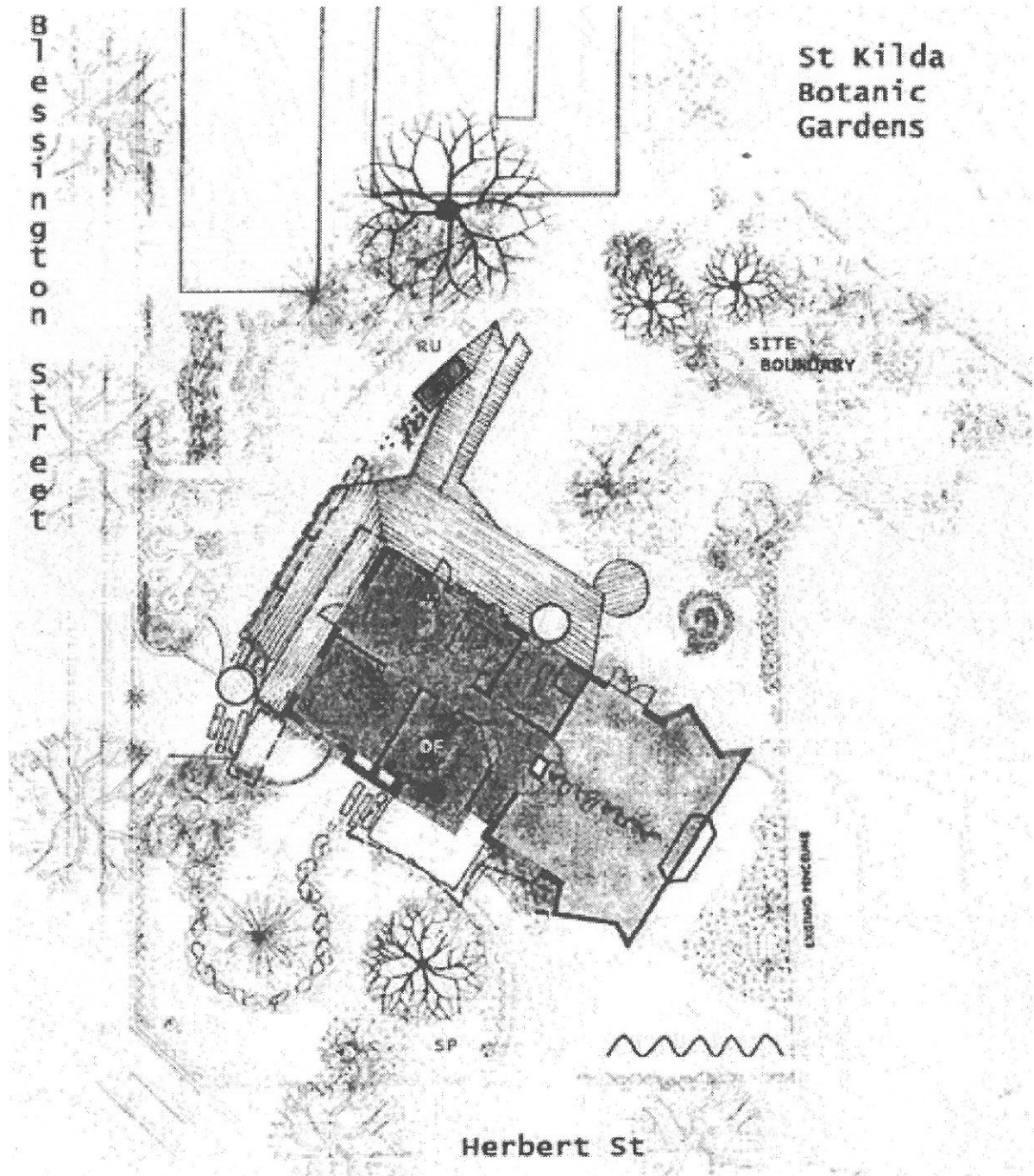


# port phillip eco centre



## annual report 2000/2001



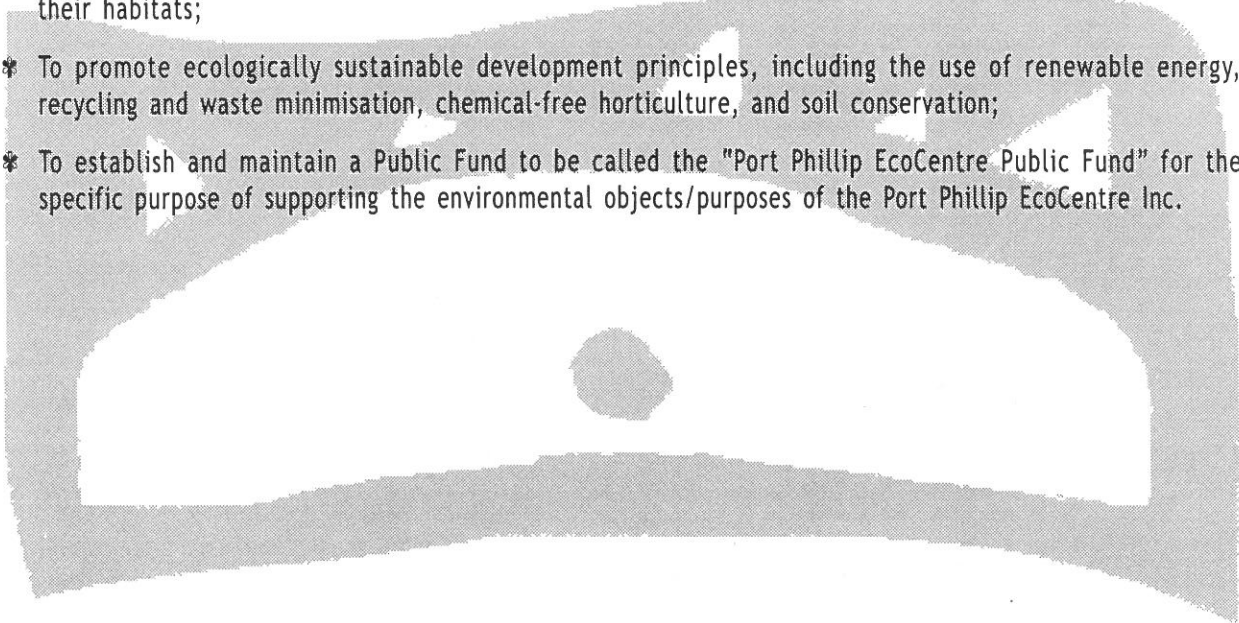
local ACTION global FUTURE

## Mission

To facilitate awareness and local action for sustainable living to protect and enhance biodiversity.

## Objectives

- \* To provide a base, resources and support for community-based environment groups within the Port Phillip region by managing and developing a community resource centre;
- \* To provide information or education to the general public to promote sustainable living and reduce the adverse impact of human activities on terrestrial and marine ecosystems;
- \* To facilitate collaborative projects between community groups, educational institutions, government agencies, and the corporate sector to protect and enhance the natural environment;
- \* To facilitate research and monitoring of air and water quality, and flora and fauna populations and their habitats;
- \* To promote ecologically sustainable development principles, including the use of renewable energy, recycling and waste minimisation, chemical-free horticulture, and soil conservation;
- \* To establish and maintain a Public Fund to be called the "Port Phillip EcoCentre Public Fund" for the specific purpose of supporting the environmental objects/purposes of the Port Phillip EcoCentre Inc.



P O R T P H I L L I P  
e c o c e n t r e

*The Port Phillip EcoCentre Inc., a not-for-profit 'umbrella' environment organisation, is a resource for groups, individuals and the business community in the City of Port Phillip and its wider region. The EcoCentre is located in the St Kilda Botanical Gardens on the corner of Blessington and Herbert Streets in St. Kilda. The office is open Monday and Tuesday between 1 and 6 p.m.. Alternate access can be arranged through the Coordinator on 03 9209 6491.*

COVER PHOTO: Floor plan of the EcoHouse project



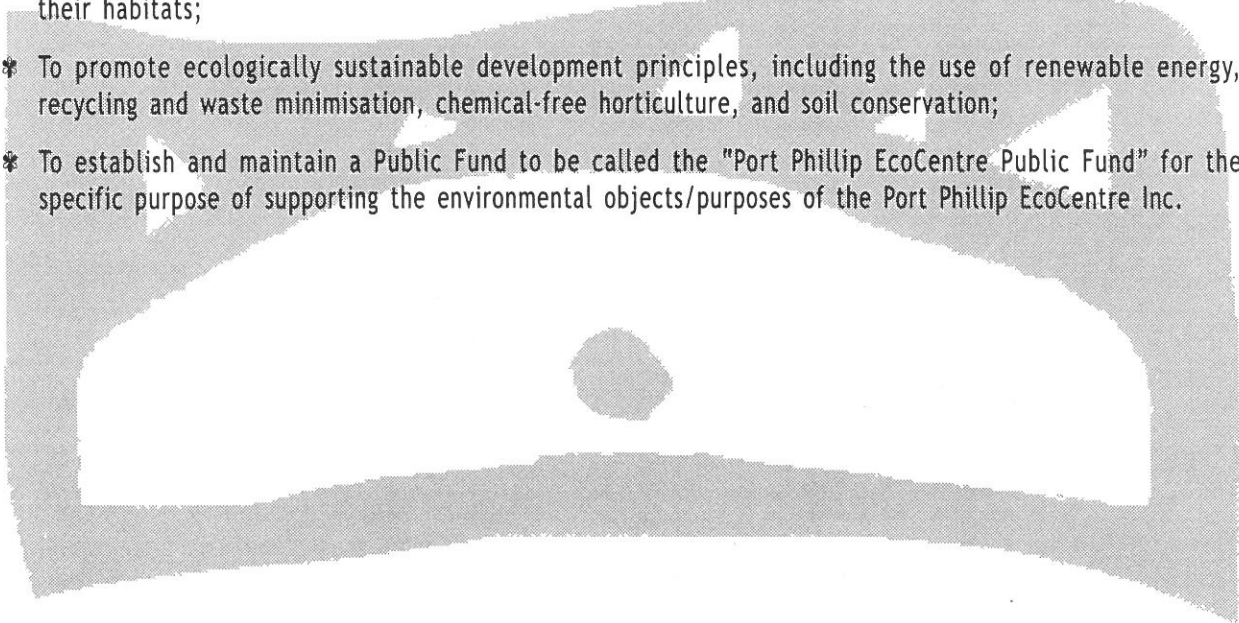
ecocentre annual report 2000/2001

## Mission

To facilitate awareness and local action for sustainable living to protect and enhance biodiversity.

## Objectives

- \* To provide a base, resources and support for community-based environment groups within the Port Phillip region by managing and developing a community resource centre;
- \* To provide information or education to the general public to promote sustainable living and reduce the adverse impact of human activities on terrestrial and marine ecosystems;
- \* To facilitate collaborative projects between community groups, educational institutions, government agencies, and the corporate sector to protect and enhance the natural environment;
- \* To facilitate research and monitoring of air and water quality, and flora and fauna populations and their habitats;
- \* To promote ecologically sustainable development principles, including the use of renewable energy, recycling and waste minimisation, chemical-free horticulture, and soil conservation;
- \* To establish and maintain a Public Fund to be called the "Port Phillip EcoCentre Public Fund" for the specific purpose of supporting the environmental objects/purposes of the Port Phillip EcoCentre Inc.



P O R T P H I L L I P  
e c o c e n t r e

*The Port Phillip EcoCentre Inc., a not-for-profit 'umbrella' environment organisation, is a resource for groups, individuals and the business community in the City of Port Phillip and its wider region. The EcoCentre is located in the St Kilda Botanical Gardens on the corner of Blessington and Herbert Streets in St. Kilda. The office is open Monday and Tuesday between 1 and 6 p.m.. Alternate access can be arranged through the Coordinator on 03 9209 6491.*

COVER PHOTO: Floor plan of the EcoHouse project



ecocentre annual report 2000/2001

## *Setting the Scene: Sustainability Trends and Issues*

The term environmentally sustainable development (ESD) has captured the world's imagination. In 1987 it was defined by the World Commission on Environment and Development (Brundtland Commission) in its report, *Our Common Future*, as "development that meets the needs of the present without compromising the ability of future generations to meet their own needs".

In 1992 the UN Conference on Environment and Development's Earth Summit in Rio de Janeiro made ESD a national and global priority. The Earth Summit produced two ground-breaking documents about how governments, corporations and individuals can take action to ensure the ongoing health of the environment we live in for future generations - Agenda 21 and Local Agenda 21; it also produced conventions on biological diversity and climate change. In our island home we keenly feel environmental pressures: reliance on non-renewable energy resources and the resultant global warming brings drought and fierce storms. Water shortages affect crops, livelihoods and lifestyles. Some of the programs to address these issues include *Our Seas Our Future*, *Coastwatch* and the *Greenhouse Challenge*, and *Environment and Biodiversity strategies*.

State governments have introduced similar strategies and programs, and local governments such as City of Port Phillip (CoPP) are dealing with the day-to-day realities, implementing the goals of Local Agenda 21. CoPP strategies include encouraging non-car and public transport, supporting sustainable development, waste minimisation, open space planning, biodiversity protection (e.g. penguins and indigenous street plantings), and water and energy conservation. Community ownership and involvement is a key element to the success of such local strategies. To fulfil this goal Council joined with community to establish the Port Phillip EcoCentre Inc.

## *President's Report*

Welcome to the EcoCentre's first annual report.

Incorporated in November and launched in December 1999 the Port Phillip EcoCentre is a non-profit Council and Community partnership that supports and promotes local sustainable living. In its role as an umbrella organisation, the EcoCentre provides environmental community groups with opportunities to publicise their activities through such media as its website and calendar of events section. In addition it provides meeting space, office facilities, the resource room, and mentoring facilities such as assisting in building links with people in Council, State and Federal Government and networking with other community groups. The EcoCentre also seeks to educate the community about sustainable living through tours, courses and its resource room.

The day to day operation of the EcoCentre is in the hands of our Coordinator - Neil Blake. The rest of the work of the EcoCentre is thanks to its willing and enthusiastic volunteer Management Committee, working group teams and individual volunteers. Since December 2000 the EcoCentre also employs Peter Barker as EcoHouse Project Coordinator.

2000/2001 has been a busy year in terms of EcoCentre projects, membership drives, funding drives and other administrative milestones. We now have eleven affiliate environmental community groups and individual members totalling around 500 people from Port Phillip and neighbouring municipalities. In financial terms our application to CoPP for continued funding was successful for 2001/2002. We have survived the rigours and challenges of the GST, two audits, and employing staff, and have established a Public Fund. The Resource Room became fully functional in

May, with computer, printer, internet access, photocopier and a catalogued reference library.

It is important to the Management Committee that we practice what we preach, and in May the EcoCentre's waste audits and action plan afforded us EcoRecycle certification as a Waste Wise organisation. Continuing that theme, we now have a productive organic garden, working compost displays and small pond filled with native flora and fauna (long-necked turtles). After lengthy negotiations we signed a three-year lease for the building and garden comprising the EcoCentre with our landlord, CoPP. The plans for the EcoHouse project were enthusiastically greeted at the first community consultation in January, indicating support for the project's concepts and ideals - not only from our residential neighbours, but also the Councillors and planning staff of CoPP.

To us, our slogan, "local action for global future", means raising awareness about the things we as individuals can do to make a positive impact on our immediate environment, our home, our gardens, workplace and neighbourhood. I hope you get some picture of this slogan at work over the following pages. The body of this annual report comprises a brief summary of the EcoCentre's activities in 2000/2001, audited financial tables and a few details about our affiliate groups.

There's a lot left to achieve, not least the EcoHouse project's planning acceptance and construction phase. Still, we have come a long way in our first year and a bit. Heartfelt thanks to all those volunteers, environment groups, employees, and CoPP staff and councillors, who have made this progress possible.

Kay McKenzie  
President  
September, 2001



## Work Programme

### Fund-raising

Current day to day operations, including provision of the Coordinator (four days per week), the building and garden and an operational budget - are supported by the CoPP. In 2000/2001 this came to around \$58,000. The EcoCentre was successful in its application to CoPP for a further year's support for the running of the EcoCentre, amounting to \$70,000 for 2001/2002. CoPP is encouraging the EcoCentre to become self-funding in the near future.

Through our membership drive the EcoCentre has raised \$690 in subscriptions from environmental community groups and individual members. These memberships not only meet the EcoCentre's main objectives, they also qualify the EcoCentre for inclusion on the Environment Australia Register of Environmental Organisations.

A major initiative in 2001 has been the amendment of the EcoCentre Constitution to provide for the establishment of a Public Fund through which to channel donations from the community. The establishment of the Port Phillip EcoCentre Public Trust Fund makes us eligible to apply for registration as an environmental organisation. This registration is a key criterion for Deductible Gift Recipient status. The EcoCentre's attractiveness to external sponsors will be enhanced with donations being tax deductible. At the time of writing application has been made to the Environment Australia grants program to meet administrative costs of regional 'umbrella' community environment groups.

Grants for various small projects have been received in 2000/2001. Through EcoRecycle Victoria's Waste Wise program, the Western Regional Waste Management Group (WRWMG) has provided funding of \$1500 towards the development of a compost display and the running of three compost workshops. With CoPP WRWMG also jointly funded the printing of a brochure developed by the EcoCentre to educate Port Phillip food traders about dealing with organic waste.

The principle focus for funding drives and grant submissions continues to be the EcoHouse project. We remain extremely grateful for the seed funding provided by the Lance Reichstein Foundation, the Myer Foundation and Central Equity. This effort was rewarded when, at the EcoFair in May State Planning Minister, John Thwaites, announced a Department of Infrastructure Urban Improvement grant of \$80,000 towards the construction of the EcoHouse. In June Melbourne Water provided \$5000.

### Auspicing

The EcoCentre has also successfully auspiced funding for local environment projects, including for the production of an environment educational kit for people with non-English Speaking Background (*One People, One Land*) funded by the Australian Greenhouse Office; and CoPP grants for Veg Out Community Artists Garden.

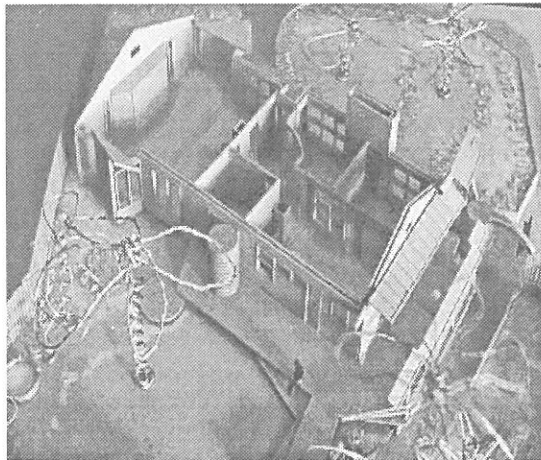
### EcoHouse Project: a major upgrade of the facility

The building that houses the EcoCentre faces East-West and is a perfect example of how *not* to design houses if you want to minimise your ecological footprint. The aim of the EcoHouse project is to transform the EcoCentre building and grounds in St. Kilda Botanical Gardens into a model, fully-functioning, sustainable habitat, in order to educate and inspire the community and act as a seed for further change. Jo Samuel-King, Earthcare's current President, initiated the project in 1999 and convened the EcoHouse Working Group (EHWG). The EHWG is a group of volunteers whose combined skills have brought about amazing and innovative solutions to the project's challenges. The EcoHouse project aims to demonstrate technologies and methods for energy and water efficiency, as well as recycling and re-use principles during and after construction. In conjunction with the EcoCentre management committee, Earthcare and the EHWG continue to play a central role.

This project is fundamental to the EcoCentre fulfilling its vision. Correspondingly it has represented a great deal of the EcoCentre's financial and human resources in 2000/2001. Since the presentation of the EcoHouse Masterplan on World Environment Day 2000 the concepts and plans have been refined. In the last quarter of 2000, the EcoCentre employed an EcoHouse Coordinator and EHWG facilitator, Peter Barker; an Architect, Peter Ho; and a Landscape Architect, Martin Reeves. Both the architects have been formally engaged with a contract specifying the environmental objectives to be met by the project.

The initial Community Consultation for the EcoHouse project on 31<sup>st</sup> January was well-attended and enthusiastic, giving much support for the urban planning permit application process. In February CoPP began an in-depth reappraisal with a consultant of the North-Western corner of the St. Kilda Botanical Gardens. The EcoCentre and EcoHouse Working Group have contributed to that process and it has affected some aspects of the EcoHouse project. As part of the CoPP planning process we are currently liaising with Heritage Victoria to ensure the design wins their approval (the Gardens are heritage listed).

The project to date has involved hundreds of people in negotiations and discussions - EHWG volunteers, EcoCentre staff and committee, Earthcare, CoPP parks, leasing and planning personnel, councillors, Heritage Victoria, potential sponsors, building and design professionals, permaculture experts, consultants (including Michael Mobbs and Alan Pears), and many more. A powerful result of the project has been the leaps achieved by all involved in understanding and practically applying sustainable living technologies in an urban setting.



Aerial view of the EcoHouse project model. Photo: Erica Lauthier

## Waste Wise

Late in 2000 the EcoCentre registered with EcoRecycle Victoria's 'Waste Wise' program and thus committed to audit waste generated by the centre; develop a waste minimisation action plan; involve the community; avoid wasteful products and practices; reuse materials; recycle; prevent litter; and aim for continuous improvement.

Following approval of its waste audits and action plan, in May the EcoCentre's was awarded EcoRecycle certification as a *Waste Wise Organisation* by the Western Regional Waste Management Group (WRWMG).

As part of the EcoCentre's role in raising awareness in the community about sustainable living - and passing on the "Waste Wise" message, the EcoCentre surveyed food traders in St. Kilda on their recycling habits and produced a report and informative brochure about how to deal with organic waste. The survey and brochure were mainly the work of RMIT Environmental Science student, Greta Thraves. The publication of the brochure was jointly funded by CoPP Environment Services and WRWMG.

The WRWMG provided the EcoCentre with a \$1500 Waste Wise grant, which funded the establishment of a "grow your own soils" display in the garden and three very popular workshops by local compost guru Tony Gardner at local community gardens. The display comprises a variety of composting and worm farm tools. Each tool has a symbol to enable people to identify the one best suited to their household. The composting area and garden have been beautified further by the Eco-Garden team and Jules Seymour, as part of his community work.



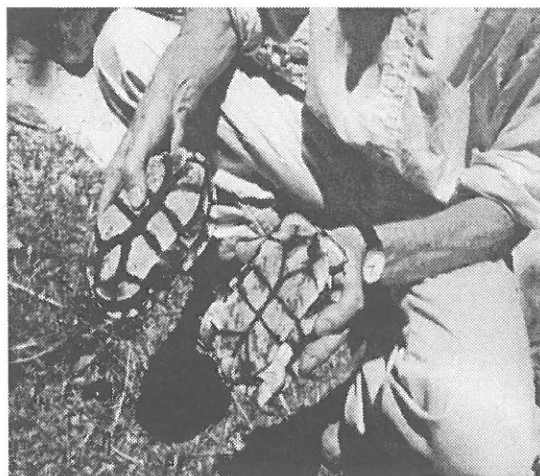
WASTE WISE IS A PROGRAM OF  
ECORECYCLE VICTORIA

## Eco-Garden

The EcoCentre's Eco-garden team has created a productive organic vegetable garden at the EcoCentre. This team will play a central role with the Education team in planning and implementing the permaculture and organic gardening education programs associated with the EcoHouse Project.

## EcoFair

Following on the success of the first, the second Port Phillip EcoFair was held at the Blessington Gardens on an extremely wet day, but that didn't dampen the enthusiasm of those that attended. Apart from supporting and assisting the CoPP's EcoFair Coordinator in the lead up to the event, the EcoCentre provided a warm, dry haven and hub of activity with the composting display, Veg Out soup kitchen, talks, turtle pond, and more.



Male and female long-necked turtles for the EcoCentre pond.  
Photo: Zoe Hogg

## Turtle Project

The EcoCentre's 'Turtle Project' aims to establish the St. Kilda Botanical Gardens pond as an open air freshwater ecology education centre, for schools and the general community. Two species of native turtles have been introduced to the pond, as well as native fish (Southern Pigmy Perch) and aquatic plants. To supplement this program at the EcoCentre's open day in December 2000 we created an indigenous habitat and introduced two long-necked turtles to a pond in the EcoCentre's garden. We are grateful to Ian Levy for his expert advice regarding turtle habitat and behaviour and to St. Kilda Indigenous Nursery Coop for providing the native flora. The EcoCentre commissioned Shane Hughes (Holmesglen TAFE Natural Resources Management student) to prepare a further report on the pond and its management. Success of the project has been highlighted with the discovery in August 2001 of baby long-neck turtles in the St. Kilda Botanical Gardens.

## Resource Room

During 2000/2001 the Committee prioritised the public Resource Room as a key function of the EcoCentre. The EcoCentre employed Alison Rowe to formally catalogue all the publications and draft rules and procedures for the Resource Room, which work she completed in 2001. It provides community access to a computer, printer, photocopier, internet access and a library full of books and materials on all aspects of environmentally-friendly living, from gardening to native plants and animals, to water and energy efficient building design and appliances, ethical investments, and more.

## Sustainability Seminars

In 2001, on the third Sunday of every month, the EcoCentre has presented a public seminar series offering ways to improve our relationship, as individuals, with the environment. Topics have included wildlife, heritage walks, local native plants, plant propagation, minimising waste, water-saving techniques, energy efficiency in the home, and ethical investments. Thank you to our wonderful volunteer speakers and organisers, including Zoe Hogg (Earthcare), Peter Hunt (Sustainable Energy Authority), Meyer Eidelson (local author, historian and naturalist), Bill Pemberton (SCARAB Solutions), Wendy Branagan (World Home Environmentalists Network), Ruth Cooper, Julian Donlen, Mohan Sundararam, and Nicola Porter (Brighton Community Access to Air Monitoring), Kay McKenzie, Janice Carpenter (Ethical Investment Services), and Chris Fayers and Stephen Reardon (Monash Centre for Environmental Management).

## Website

[www.ecocentre.com](http://www.ecocentre.com) plays an increasing role in publicising local community environment activities through the 'What's On' web page. Alison Rowe and Rob Rowe carry out regular updates and upgrades of the website. In June Alison Strachan completed a most informative and beautifully presented EcoHouse web page comprising the project's philosophical background, actual specifications and photos of the model. The eagerly anticipated penguin page comprising information, graphics and games all about St. Kilda's rather special penguin colony is also now online, thanks to funds from the City of Port Phillip and the collective efforts of many from the Management Committee.

## Education Team

With a focus on developing curriculum-based programmes to be delivered through schools in the region, the Education team's main work is continuing to promote the EPA Victoria

TXU Airwatch program to local schools; and the Elster Trail education project. Within the scope of the Elster Trail project, we envisage our role as facilitating and developing activities specific to the local area for existing school programs.

Completion of the EcoHouse Project will provide the possibility to demonstrate sustainable design and systems for rainwater treatment, composting, photovoltaic cells and recycling. The St. Kilda Botanic Gardens, the EcoCentre's turtle pond and AirWatch monitoring equipment, together with the proximity to Acland Street, Veg Out and St.Kilda Beach, have been identified as potential educational assets which can be incorporated into a modular EcoCentre education package.

## Airwatch

TXU Airwatch is an exciting program initiated by the CSIRO and facilitated in Port Phillip by the EcoCentre through provision of kits and support. Students of primary and secondary schools can become air pollution watchdogs in their local area. Through involvement in investigating and analysing local air quality students are able to understand local and global air quality issues and are encouraged to become actively involved in finding solutions to air quality problems. In March 2000 the EcoCentre purchased four air monitoring kits and distributed them to local secondary schools. The schools feed the results of their tests back to EPA Victoria. As a result of the higher profile given to air monitoring by EPA Victoria's joint venture with TXU Energy two of the schools have presented their results on the Channel 7 News.

Augmenting the EcoCentre's support of the 'AirWatch' program, we are assisting Brighton Community Access to Air Monitoring volunteers (see Affiliate Groups section) who monitor air quality at EPA Victoria's Brighton monitoring station. A secondary phase of the project will be to disseminate the results within the local community.

## Elster Trail

The Elster Trail project aims to promote awareness of catchment management issues, and appreciation of local cultural and natural heritage, whilst consolidating and enhancing the existing (informal) linear walking trail of approximately 14 kilometres, which tracks the course of the Elster Creek from Carnegie to the Elwood foreshore. The trail will enhance the region, providing pedestrian and cycle access from inland suburbs to the coast. The process of development and use of the trail present excellent opportunities for community involvement and for the development of education programs to promote awareness of catchment management issues.

As well as providing facilitation support for the newly formed Friends of Elster Trail community group, the EcoCentre Education team is developing air, water and biodiversity activities for primary schools located along the trail.

## *Other Organisational Milestones for 2000/2001*

### **Inaugural Annual General Meeting**

The inaugural AGM and election of office-bearers was conducted in August 2000. The meeting endorsed a Strategic Plan for 2000/2001.

### **Financial management**

The EcoCentre is registered for GST and has an ABN. In 2000/2001 we successfully completed four Business Activity Statements and two audits.

### **Lease Agreement**

A three-year lease of the building and grounds (commencing July 2001) was negotiated with CoPP. The agreement includes guidelines to ensure that EcoCentre operations and site redevelopment (the EcoHouse project) complement the streetscape and the St. Kilda Botanical Gardens.

### **Employment**

The EcoCentre now employs three people: the EcoHouse Coordinator, the EcoHouse Architect and the EcoHouse Landscape Architect (the EcoCentre Coordinator is employed by CoPP to work at the EcoCentre four days per week).

### **Membership**

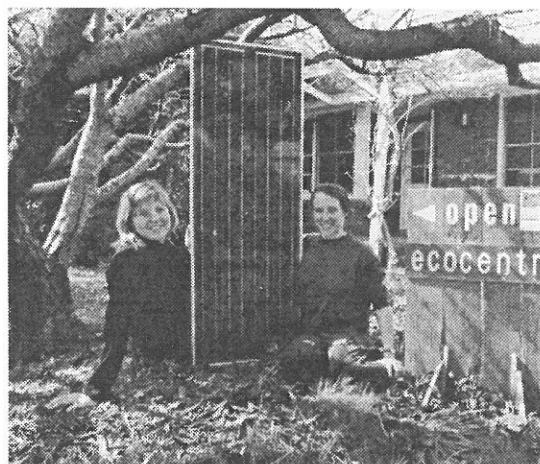
In February the Management Committee settled on a membership policy and launched a membership drive in order to formalise the EcoCentre's support base and status as an umbrella environment group. As we go to press, the EcoCentre has 11 affiliate group members representing around 500 people in Port Phillip and neighbouring municipalities; and 17 individual members.

### **Media and Publicity**

The Committee recently approved a media and publicity policy to ensure a consistent public presence for the EcoCentre. The EcoCentre appears to have already captured the imagination in 2000/2001, having appeared in no less than 31 articles in the local press and one in *The Age* and as the subject of a feature article in January's *Local Government Annual Review* publication.

### **EcoCentre Community Network Data-base**

We envisage affiliations and cross-fertilisation between groups within the local region will strengthen and enhance the success of each group. In 2000/2001 the EcoCentre completed the compilation of a data-base of community groups active within CoPP and neighbouring municipalities.



Emma Hess and Jo Samuel-King with a solar panel for the EcoHouse project. Photo courtesy of "The Emerald Hill Times"

## *People*

Nothing is possible without the tireless efforts and enthusiasm of individuals. Members of prominent Port Phillip environmental community groups Earthcare, Veg Out (St. Kilda Community Artist Gardens) and Park Community Association, as well as a number of non-aligned EcoCentre enthusiasts were elected to the first Management Committee at the inaugural Annual General meeting in August 2000. There are a total of twelve committee members (see back cover) who have contributed significantly to the development of the EcoCentre's ideals. Special mention must be made of Zoe's excellent work as EcoCentre Treasurer in cheerfully and successfully navigating the previously uncharted waters of staff, the GST and Business Activity Statements. Many people have contributed their knowledge and experience to the EcoHouse project. Many other volunteers have contributed to the kitchen, garden, compost areas and displays. They include Gabrielle Wolde, Spike Kiernan, Steve Pennells and Katie Muir.

During the year Neil took a total of four months of long-overdue leave. The Committee was extremely fortunate in the good-natured efficiency of our two very accommodating and energetic stand-in Coordinators - Emma Hess in 2000 and Louise Kyle in 2001. Thank you both.

Congratulations to all the environmental volunteers in the Port Phillip community for their efforts in this Year of the Volunteer (and other years!). It was a proud day for the EcoCentre when the City of Port Phillip publicly recognised a select few individuals and groups with their Green Palm Awards in June. Stephen Pennells - an EcoCentre volunteer and long-term volunteer for "community action", Zoe Hogg - the EcoCentre Treasurer and V-P of Earthcare for "catchment and coastal management". Our very own Neil Blake was awarded joint Global Green Palm Award recipient with Earthcare for their many years of dedicated service to Port Phillip's environment.

Last but not least, the Committee is extremely grateful to all the staff and councillors at the CoPP for their positive and learned support and guidance throughout the year.



## *Future Directions*

### **Infrastructure development**

The EcoHouse Project will continue to be a major focus of EcoCentre activity and its progress will directly influence the coming year. Our objectives are to raise a further \$80,000, complete the urban planning phase and commence construction. The EcoHouse design provides more space for further development of Resource Room and sustainable living displays, as well as visitor information on the Botanical Gardens.

### **Meeting commitments to members, sponsors and the wider community**

During the EcoHouse construction member services will be maintained through the newsletter, website listings and alternative meeting and office arrangements. EcoCentre education programs for 2001/2002 include a school activities program with fee structure, and the CoPP 'Sustainable Living At Home' program.

### **Administration and Financial Requirements**

Appropriate resources will be committed to statutory requirements, such as BAS and the financial audit. We are seeking funds for the employment of an administrative assistant to support the Committee, Coordinator and affiliate groups.

### **Marketing and fundraising**

To promote donations, sponsorships, and financial viability for the EcoCentre and broaden our membership base we are developing a comprehensive marketing strategy. Once we have endorsement as a Deductible Gift Recipient we aim to publicise the Port Phillip EcoCentre Public Fund to potential project sponsors and donors.

### **Sustaining the committee!**

To sustain, support and expand our volunteer base we are pursuing a recruitment program for new committee members, deputies and volunteers for specific projects, whilst providing volunteers with training opportunities and proper acknowledgement.



Veg Out St. Kilda Community Artist Gardens. Photo Joy Finch, courtesy Green Connections

*"Veg Out couldn't do without the EcoCentre for the computers and facilities it offers us." Judith Birch, Secretary.*

## Affiliate Groups

Current affiliate groups and their key activities are:

**Australian Marine Conservation Society – Melbourne Branch's** mission is to encourage conservation of Victoria's marine and coastal environment. Major current and planned activities include the Reefwatch Project, radio documentaries, an aquaculture brochure, and campaigning for Marine Parks.

**Brighton Community Access to Air Monitoring** is an EPA Victoria initiative that involves volunteers in air quality monitoring at regional air monitoring stations. A key goal of the project is broader community education to be achieved through local dissemination of data and information on air quality issues.



Earthcare planting day at Alma Park. Photo Zoe Hogg

**Earthcare St. Kilda Inc.** is a vital and practical local environmental group that works closely with specialists and council to improve the environment of Port Phillip. Their current projects include: monitoring and protection of the St Kilda penguin colony, revegetation projects at West Beach and Sandringham Railway reserve, facilitation of an indigenous flora book, the EcoHouse project, and study of the local Rakali (native water rat) population.

**Friends of Port Melbourne Foreshore Inc.** aims to

- \* achieve a clean beach and swimming and marine environment;
- \* protect and enhance public open space and the natural environment of the foreshore;
- \* support only such uses of the foreshore that respect it, users of it, and residents living in close proximity to it;
- \* protect important view corridors from the foreshore to the CBD; and
- \* strongly support the retention and protection of historic buildings and remnant vegetation.

**Garden of Eden Inc.** is a non-profit community organisation whose training program has won federal approval for its 3<sup>rd</sup> successive term. The program includes a Permaculture Design Course. Their Art Garden project has also received funding from the City of Port Phillip as part of the Cultural Development Fund – 2001/2002 round. This project will run concurrently with the work-for-the-dole project and the Swinburne Community Options program, which provides practical gardening experience and support for people with

disabilities. Their Community Garden Education and Training Centre recently received an award from the City of Port Phillip for achievements in contributing to a stronger local community.

**Park Community Association Inc.'s** objectives include fostering wider community interest and appreciation of Albert Park reserve and its uses, history, and natural environment. The group also has a specific interest in facilitating reconciliation through landscaping projects.

**Plastic Bag Theatre** group was formed to respond to social and environmental issues with a focus on performance in outdoor settings.

**St. Kilda Indigenous Nursery Cooperative's** primary aims are to propagate, grow, sell and supply flora indigenous to the Melbourne Sandbelt region, and to actively promote the principles of indigenous flora use and sustainable horticulture.



SKINC/Earthcare/Naturelinks seed collection workshop with primary school children. Photo: Zoe Hogg

**Surfrider Foundation Melbourne's** primary activities are coastal protection including revegetation at Point Impossible, and campaigns for Marine national parks, to address marine pollution and combat Abalone poaching.

**TEVA (Jews and the Environment)** approaches environmentalism from a Jewish perspective and attempts to integrate aspects of Judaism with modern ecological understanding and commitment. TEVA has three main goals: education, action, and recreation.

*"Joining gave TEVA a much-needed  
"central" gathering place. We urge the  
EcoCentre to continue to support  
community organisations in their efforts  
to become environmentally aware."*

*Ruth Cooper*

**Veg Out Community Artists Garden** seeks to create a unique, supportive and safe haven within the City of Port Phillip for all citizens. We promote a sense of community where trust, effort, knowledge, skills and responsibility are shared. Current projects include development of schools education program on sustainable agriculture and permaculture.

## Financial Report 1 July 2000 – 30 June 2001

This financial year was a difficult year for any group to create a cash record. Coping with pre and post GST finances, followed by alterations to the BAS forms was by no means easy. The tax office programme E Record, downloaded from the internet, was a help but became suddenly out of date and did not agree with the latest BAS forms. The mixed accounts of Veg Out and the EcoCentre caused further complications. Veg Out now runs its own treasury and problems with BAS forms have been resolved.

The Dol grant of \$80,000 (see **Fundraising** for more details) is actually being held in the City of Port Phillip coffers as the EcoCentre applied for it through Council. We received \$33,070 in grants during the year. A large part of these grants was spent on wages for the EcoHouse Coordinator and designs for the EcoHouse project. We also received \$690 in membership subscriptions.

Zoe Hogg  
Treasurer

## Financial Tables 1 July 2000 - 30 June 2001

### Receipts

Western Region Waste M'tment Council grant (Grow Your Own Soils project)	\$ 1,500.00
Australian Greenhouse Office grant (Many people One land education kit)	\$ 8,000.00
City of Port Phillip grant (Many people One land education kit)	\$ 3,570.00
Earthcare (EcoHouse Project grant transfer)	\$ 10,000.00
Earthcare (EcoHouse Project grant transfer)	\$ 10,000.00
Book Sales	\$ 506.00
Membership	\$ 690.50
CAE (Sustainable House courses)	\$ 764.00
CoPP wages (Temporary Coordinator)	\$ 1,920.00
Photocopies etc in petty cash	\$ 174.15
Interest	\$ 153.95
CoPP lunch	\$ 180.00
City of Port Phillip <i>in-kind contributions</i> (Coordinator wages & operating costs)	\$ 57,960.00
<b>Total Receipts</b>	<b>\$ 95,418.60</b>

### Expenditure

Wages (EcoHouse Project Coordinator)	\$ 8,836.00
Wages (Temporary Coordinator)	\$ 1,386.00
Superannuation (Local Authorities Superannuation Board)	\$ 401.76
Peter Ho (EcoHouse: architect)	\$ 2,327.00
James Stronell (EcoHouse: water consultant)	\$ 405.50
RJF services (EcoHouse: energy consultant)	\$ 600.00
Martin Reeve (EcoHouse: landscape architect)	\$ 2,250.00
Heritage Victoria (EcoHouse: planning fee)	\$ 85.00
CoPP urban planning (EcoHouse: planning fee)	\$ 280.00
Hall Hire (Cora Graves Centre for Sustainable House course)	\$ 120.00
CoPP Lunch	\$ 180.00
Fairtrading (forms lodgement fee)	\$ 33.00
Janine Lawrie (Many People One Land education kit)	\$ 10,386.00
Tierra permaculture (compost workshops)	\$ 400.00
Vicnet (internet access)	\$ 280.59
Affiliations	\$ 130.00
City of Port Phillip <i>in-kind contributions</i> (Coordinator wages & operating costs)	\$ 57,960.00
<b>Total Expenditure</b>	<b>\$86,060.85</b>

### Operating Surplus

**\$ 9,357.75**

**Note:** The above figures have been extracted from the audited Financial Statements for the year ended June 30, 2001. For a full set of the Financial Statements please phone the Coordinator, Port Phillip EcoCentre on 03 9209 6491.



### **Management Committee**

Kay McKenzie, President  
John Addie, Vice President  
Alison Rowe, Secretary  
Zoe Hogg, Treasurer, Finance Team  
Josephine Samuel-King, Strategic Coordinator, EcoHouse Project  
Don Linke, Veg Out Representative  
Tony Gardner, Permaculture and Composting expert  
Julian Donlen, Education Team  
Louise Kyle, Education Team  
Robert Rowe, Web development  
Hartmut Grieb, Park Community Association Representative and Finance team  
Neil Blake, Public Officer

### **Student Employees**

Shane Hughes, Greta Thraves, Kaj Andersson

### **Volunteers**

Spike Kiernan, Stephen Pennells, Gabrielle Wolde, Katie Muir

### **EcoHouse Working Group contributors**

Peter Barker (EcoHouse Coordinator and Facilitator)  
Neil Blake  
Geoff Boadle  
Paul Bowler  
Freda Erlich  
Hartmut Grieb  
Duncan Hall  
Peter Ho (Architect)  
Tracey Ibrahim  
Jonathon Long  
Sharon MacCauley  
Kay McKenzie  
Jo Malignaggi  
Martin Reeves (Landscape Architect)  
Alison Rowe  
Josephine Samuel-King (EcoHouse Strategic Coordinator)  
Melanie Seal  
Alison Strachan (EcoHouse web page designer)  
Bianca Tootell

### **Sustainability Consultants**

Bill Pemberton, Scarab Solutions  
Peter Graham, Department of Building & Construction Economics, RMIT  
Michael Mobbs, Sustainable House  
Tony Gardner, Tierra Permaculture  
Carolyn Cackles, Group Process Facilitator  
Alan Pears, Sustainable Solutions Pty. Ltd.  
James Stronell, Water consultant  
Lawrence Harvey, RMIT Acoustic Ecologist  
Dr Bob Fuller, Energy consultant.  
Uta Wight, Harmless House Design

### **Statutory Planning and Process Advisors**

Louise Barbon-Elliott, Urban Design Consultant, City of Port Phillip.  
Louise Johnstone, Urban Planning Department, City of Port Phillip.  
Justine McCormick, Urban Planner, Department of Infrastructure, North West Metro Region.

### **Affiliate Groups**

Australian Marine Conservation Society - Melbourne Branch  
Community Access to Air Monitoring Brighton  
Earthcare St.. Kilda Inc.  
Friends of Port Melbourne Foreshore Inc.  
Garden of Eden Inc.  
Park Community Association Inc.  
Plastic Bag Theatre  
St. Kilda Indigenous Nursery Cooperative  
Surfrider Foundation Melbourne  
TEVA  
Veg Out Community Artists Garden

### **Individual Members**

Kay McKenzie, John Addie, Alison Rowe, Zoe Hogg, Neil Blake, Robert Rowe, Josephine Samuel-King, Hartmut Grieb, Tony Gardner, Don Linke, Louise Kyle, Julian Donlen, Freda Erlich, Rosey Haas, Naomie Sunner, Stephen Pennells, Lovekin Evans, Bill Pemberton Nicki Furkert



Editor: Kay McKenzie  
Authors: Kay McKenzie, Neil Blake, Don Linke, Zoe Hogg  
Acknowledgements: René Büman, Dani Jones, Phoenix Magazines  
Desktop Publishing: Kay McKenzie  
Cover Design: Emma Clark



Port Phillip EcoCentre Inc.  
55A Blessington Street  
St. Kilda VIC 3182  
Tel: 03 9209 6491  
Fax: 03 9525 3102

ABN: 66 852 809 680  
Incorporated Association No. A0038897K



WASTE WISE IS A PROGRAM OF  
ECORECYCLE VICTORIA

l o c a l A C T I O N g l o b a l F U T U R E

*Printed on recycled paper made from 80% sugar cane waste fibre*