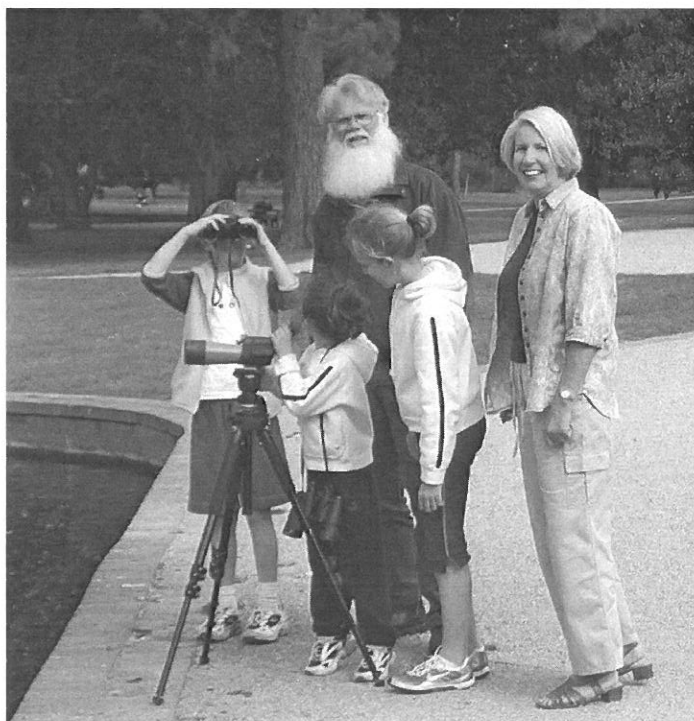




SUStainability EduCatiOn



REsearch

MISSION

**To facilitate awareness and local action
for sustainable living to protect and enhance biodiversity.**

OBJECTIVES

- To provide a base, resources and support for community-based environment groups within the Port Phillip region by managing and developing a community resource centre;
- To provide information or education to the general public to promote sustainable living and reduce the adverse impact of human activities on terrestrial and marine ecosystems;
- To facilitate collaborative projects between community groups, educational institutions, government agencies, and the corporate sector to protect and enhance the natural environment;
- To facilitate research and monitoring of air and water quality, and flora and fauna populations and their habitats;
- To promote ecologically sustainable development principles, including the use of renewable energy, recycling and waste minimisation, chemical-free horticulture, and soil conservation;
- To establish and maintain a Public Fund to be called the "Port Phillip EcoCentre Public Fund" for the specific purpose of supporting the environmental objects/purposes of the Port Phillip EcoCentre Inc.

The Port Phillip EcoCentre Inc., a not-for-profit 'umbrella' environment organisation, is a resource for groups, individuals and the business community in the City of Port Phillip and its wider region. The EcoCentre is located in the St Kilda Botanical Gardens on the corner of Blessington and Herbert Streets in St. Kilda.

Authors: Julian Donlen, Neil Blake, Michele Hodes

Design: Julia Dyer

Editor: Neil Blake

PRESIDENT'S REPORT

Welcome to the EcoCentre's Annual Report for 2003-04.

This past year at the EcoCentre has been one of consolidation. Our local action has concentrated on creating a functional, vibrant and sustainable community facility, following the physical transformation of our home in St Kilda Botanical Gardens. Fulfilling this vision has seen new ventures and directions involving significant growth and effort. This report highlights how the EcoCentre, with help from our numerous partners, supporters, affiliate groups and community volunteers, has continued 'to facilitate awareness and local action for sustainable living to protect and enhance biodiversity' across the wider Port Phillip region.

Apart from ongoing weekly EcoHouse tours, we've engaged in major public events during the past year: Solar House Day in September 03, the Eco Healing Day in January; the hugely successful Global Garden Party in March, and the Quiksilver Boardriders' Club Coast Care Day at St Kilda Foreshore on World Environment Day. These events showcased our ideal of affiliates coming together to achieve more through the EcoCentre partnership. The EcoCentre has facilitated connections with City of Port Phillip programs such as the Sustainable Community Progress Indicators project. Our affiliates have also made greater use of the facility and continue to deliver their own dedicated environmental activities.

Completion of landscaping surrounding the EcoCentre in the North West corner of the Gardens has extended and complemented our efforts in the EcoHouse Project. The new access path, retention of the glasshouses and the new community garden have created new opportunities for community engagement, whether it is the 'Growing Friends' propagating heritage plants, the EcoGarden group producing organic vegies for events or the many visitors who stop to admire the solar panels.

Use of the EcoCentre has been in demand by many varied groups for activities all connected with the ideal of living more sustainably, e.g. yoga and meditation, creative performances and healing workshops, the EcoChoir and the Green Mums group meetings. Our education programs also continue to develop, with students of all ages coming to the EcoHouse to learn about sustainable design, living and the environment.

Further innovative partnerships and programs have aided our delivery of environmental outcomes for mutual benefit. Holden continue to support our projects in Westgate Park and South East Water has collaborated in monitoring and development of our unique EcoHouse water systems. The 'New Environmental

Directions' project is a unique partnership between an environmental community centre and a Disability Services provider in Central Bayside Community Health Service, further connecting the regional community. Our 'Work for the Dole' (we prefer 'Community') partnership with Kangan Batman TAFE is in its second program, delivering valuable communications resources.

The undoubted highlight has been the successful Partnership Agreement with the City of Port Phillip. While we have always enjoyed their bountiful support as the major sponsor, Council's approval of this 15 year agreement secures our long-term future, and recognises what has achieved thus far as well as the demonstrated capacity for growth. Imagine all the work that the EcoCentre can achieve by 2019!

We now have a solid foundation to further the cause of our affiliates and partners, but remain ever mindful of our own development as an organisation. As I write we are currently advertising for a Business Support Officer. This second staff member will enable maintenance of our core functions while providing the opportunity to develop more strategic partnerships and projects, and there are plenty of ideas to develop.

While this major milestone brings in a new era of independence, the focus for our immediate sustainable future is to cultivate community members who wish to engage with EcoCentre activities and mission - not just using the facility but helping it grow and achieve.

Thankyou to ALL those involved in continuing the EcoCentre's mission and development, much of whose work is detailed in the following pages. Special thanks to our esteemed Coordinator, Neil Blake, for continuously inspiring further achievement and generating growth. Thanks also to the Management Committee who have worked hard together to progress ideas to fruition. And to everyone else: It's your EcoCentre, come and use it with us to demonstrate local action for a global future.

Julian Donlen

President, September 2004

Financial Report: July 1, 2003 – June 30, 2004

Where do I start? There is so much going on at the EcoCentre it is hard to comprehend how it all happens with so few. The retro-fit is well & truly behind us. Now projects, sales & services are the way forward AND they all generate revenue.

Book sales & gift pack sales have proven an ongoing success. Our sales, services & memberships have grossed nearly \$12k. I use the term "services" broadly to include activities such as venue hire & catering, holiday programs, tours etc. I expect these types of activities will become a major source of revenue in time.

Ongoing projects such as the 'Westgate Frogs' and 'Penguin Research' are on track within their funding limits (approx. \$16k & \$8.5k respectively spent this financial year).

We have attracted new funding from Landcare Australia for Quicksilver Day (\$11k) & City Of Port Phillip for SCPI Project ((\$12k). We have received just under \$8.5k in donations & paid under \$3k in tax (including income tax).

As some funds have been received for projects which will be rolled out over time, we have been able to invest \$25,000 in interest bearing accounts at Bendigo Bank.

The Work For the Dole program has been the major area of income and expenditure this financial year. Apart from providing invaluable labour to further develop the EcoHouse, the program has enabled us to hire a part-time staff member, purchase equipment and desperately needed hardware, including a new accounting system. With so much going on this should make life as the Treasurer much easier!

Michele Hodes

Treasurer

Independent Audit Report to the members of Port Phillip Ecocentre Inc.

Scope

I have audited the financial report, being a special purpose financial report, of the Port Phillip EcoCentre Inc. for the year ended 30 June 2004 as set out on pages 1 to 5. The Committee is responsible for the financial report and has determined that the accounting policies used and described in Note 1 to the financial statements which form part of the financial report are appropriate to meet the requirements of the Associations Incorporation Act (Vic.) and are appropriate to meet the needs of the members. I have conducted an independent audit of this financial report in order to express an opinion on it to the members of the Port Phillip Eco Centre Inc. No opinion is expressed as to whether the accounting policies used are appropriate to the needs of the members.

The financial report has been prepared for the purpose of fulfilling the requirements of the Associations Incorporation Act (Vic.). I disclaim any assumption of responsibility for any reliance on this report or on the financial report to which it relates to any person other than the members, or for any purpose other than that for which it was prepared.

My audit has been conducted in accordance with Australian Auditing Standards. My procedures included examination, on a test basis, of evidence supporting the amounts and other disclosures in the financial report and the evaluation of significant accounting estimates. These procedures have been undertaken to form an opinion whether, in all material respect, the financial report is presented fairly in accordance with the accounting policies described in Note 1 so as to present a view which is consistent with my understanding of the Association's financial position, and performance as represented by the results of its operations and its cash flows. These policies do not require the application of all Accounting Standards and other mandatory professional reporting requirements in Australia.

The audit opinion expressed in this report has been formed on the above basis.

Audit Opinion

In my opinion, the financial report of the Port Phillip EcoCentre Inc. presents a true and fair view of the financial position of the Port Phillip EcoCentre Inc. as at 30 June 2004 and the results of its operations and its cash flows for the year then ended in accordance with the accounting policies described in Note 1 to the financial statements.

BUCKLEY & CO.

Chartered Accountants

Martin Buckley

PORT PHILLIP ECOCENTRE INC. BALANCE SHEET AS AT 30 JUNE 2004

Equity	2004	2003
Accumulated Surplus Brought Forward	323,406	164,175
Operating Surplus For Year	3,371	159,231
Total Equity	\$326,777	\$323,406
Current Assets		
Cash at Bank – General Account	3,921	15,669
Cash at Bank – Public Fund	17,061	48,934
Cash at Bank – Work for the dole	10,643	-
Investment – Cash management	10,000	-
Investment – Term deposit	15,000	-
Total Current Assets	\$ 56,625	\$ 64,603
Non Current Assets		
Eco House, at cost	260,019	250,896
Plant & Equipment, at cost	13,061	11,050
Total Non Current Assets	\$273,080	\$261,946
Total Assets	\$329,705	\$326,549
Current Liabilities		
GST/PAYG Payable	2,928	3,14
Total Current Liabilities	2,928	\$3,143
Net Assets	\$326,777	\$323,40

The accompanying Notes form part of this financial report.

PORT PHILLIP ECOCENTRE INC. STATEMENT OF INCOME AND EXPENSES FOR THE YEAR ENDED 30 JUNE 2004

Income	2004	2003
DNRE Coast & Cleanseas Grant	-	11,333
COPP Frog Project Grant	-	9,091
Landcare Australia	10,000	30,000
Toyota	-	10,000
JT Reid	-	9,091
Book Sales	5,262	1,795
Membership	1,400	405
Donations	9,964	61,112
Gift Pack Sales	257	241
Sundry Income	1,414	364
Solar Panel Rebate	-	7,920
Timber Sales	-	818
Venue Hire	401	139
City of Port Phillip Training Contribution	-	700
City of Port Phillip Wages Contribution	-	8,364
City of Port Phillip Contribution to Eco House	-	59,821
City of Port Phillip Contribution to Expenses	78,071	89,900
City of Port Phillip SCPI Project Grant	10,909	-
Administration fees	805	-
Kangan Batman TAFE WFD Grant	26,400	-
Total Income	\$144,883	\$301,094

The accompanying Notes form part of this financial report.

PORT PHILLIP ECOCENTRE INC. STATEMENT OF INCOME AND EXPENSES FOR THE YEAR ENDED 30 JUNE 2004

Expenses	2004	2003
Frog Project	14,353	12,207
Administration fees	805	-
Advertising	105	-
Bank Charges	105	228
Books	-	173
Casual Labour	-	240
Catering	1,259	1,150
Computer Costs	-	530
Consultants fees	220	-
Gardening	2,138	-
Gifts	38	-
Gift Packs	-	1,140
GST Adjustment	-	-
Hire of Plant & Equipment	-	2,713
Internet Access	1,168	-
Insurance	475	1,305
Lodgement Fees	32	30
Penguin Project	7,819	-
Petty Cash	1,814	-
Printing & Stationary	389	85
Quiksilver project	4,585	-
Registrations	64	345
Repairs & Maintenance	1,305	59
Replacement Co-ordinator	6,215	3,209
Replacements (tools, etc)	1,347	-
Book Royalty Payments - Earthcare	2,633	-
School holiday/Education activity	120	-
Seminars & Training	-	27
Staff Amenities	135	74
Staff Training	273	-
Subscriptions	124	-
Sundry Expenses	137	-
Superannuation	-	863
Travelling Costs	-	835
T-Shirts	-	218
Wages	15,331	26,322
WorkCover	452	210
City of Port Phillip Payment of Expenses	78,071	89,900
Total Expenses	\$141,512	\$141,863
Operating Surplus	\$ 3,371	\$159,231

MAJOR PROJECTS

EcoCentre Education Unit

ECOCENTRE EDUCATION UNIT was established in January 2004 to provide environmental education resources and expertise to schools and other community groups. During the year we have concentrated on preparing and promoting educational activities for schools based on the Science Curriculum Standards and Frameworks. Using Westgate Park, the St. Kilda Botanic Gardens and the St. Kilda pier we have involved students in hands on activities such as propagation of plants and planting of habitats as well as promoting awareness of the effects of air and water pollution, and the important contribution individuals can make to improve the environment. Feedback from the schools involved in the programs has been extremely positive.

We would like to thank SKINC, Earthcare St. Kilda, Friends of Westgate Park, Parks Victoria and Holden Ltd. For their assistance in our activities this year, and look forward to expanding our program to include more EcoCentre affiliate groups in 2005. For more information please contact NOEL GILCRIST 9531 4926

CoPP Sponsors EcoCentre

The City of Port Phillip initiated the concept of a local EcoCentre to champion local environmental action and showcase leading technologies in 1998. A community working-group was established to plan the most appropriate organisational structure, develop policy, and identify the best location for it.

As a result the Port Phillip EcoCentre Inc, a not-for-profit community-managed group was incorporated in 1999.

Since then the CoPP has been supporting the EcoCentre on a yearly basis by providing a staff member (4 days per week) and an operational budget to meet basic running costs. CoPP also contributed \$100,000 (around one third of the total required) for the EcoHouse Project which transformed the existing house in St Kilda Botanical Gardens into a user friendly community centre which demonstrates sustainable design and practices.

The success of the EcoHouse Project is a clear indication that effective collaboration between Local Government and community organisations (a key criterion for most funding bodies) maximises opportunities to attract environmental project funding to the benefit of Port Phillip residents.

The community-based management committee has been responsible for planning projects and securing funds required to implement them. The EcoCentre now has 15 affiliate groups and has achieved major successes in partnership with government agencies, other community groups, corporate sponsors and schools.

In recognition of these successes and the benefits to residents and the wider community the CoPP has entered into a 15 year sponsorship agreement which will contribute \$145,000 annually to the EcoCentre for the first 3 years. This provides for increased staff for administration and fundraising. Thereafter the contribution will be reduced to \$115,000 per year. The agreement will be subject to review each 5 years

The EcoCentre is widely respected for its history of facilitating and implementing successful partnership projects. People from all walks

of life (from visiting international scholars to local residents) visit the EcoCentre.

Westgate Park Frog Project

In the past 2 years Port Phillip EcoCentre has received \$58,000 sponsorship from Holden (via Landcare) to plan and implement a frog habitat enhancement project at Westgate Park. The EcoCentre has coordinated planning and implementation works in consultation with Holden, Landcare and Friends of Westgate Park; and liaised with other contributing organisations including Parks Victoria, Amphibian Research Centre and St Kilda Indigenous Nursery Cooperative.

Only \$40K of Holden funds has been expended to date, as a result of plantings in the first 12 months of the project being restricted to minimise plant losses due to the drought. Also, additional project sponsorship and support secured by the EcoCentre (\$10K from City of Port Phillip; Parks Victoria funding of the windmill, and delivery of 150m3 of woodchip mulch by Citywide Tree Services) substantially added value to the project and reduced direct costs.

City of Melbourne is supporting the Community Photography exhibition, and RMIT students have been involved in conduct of field surveys.

Contributions from Holden staff has included: mulching, plant propagation and planting to establish a 'swamp scrub' landscape at the windmill site; and involvement in the project team to plan and develop the 'Water Under the Bridge' community photography exhibition concept.

Schools involvement has included: Albert Park Primary School. Grades 3 & 4 participated in activities days at Westgate Park in April & Oct 2003 and May 2004.

Elwood Primary School: Participated in an activities day in Oct 2003

Elwood Secondary College: Year 8s participated in activities day, June 2004 and featured in the ABC television broadcast on 'George Negus Tonight'.

Areas developed

Earthworks to create two areas of frog habitat: planting of ponds and swamp shrub community at the horseshoe billabong and one at the northern border of the park designed and planted by the Friends group. Note: This latter pond was quickly colonised by Striped Marsh frogs and Common Froglets which had previously existed in vicinity of the pond. Striped Marsh Frogs have been recently recorded in the Windmill ponds.

Number of plants in the ground to June 2004: 14,320

Research elements of the project has included investigation of options for rainwater harvesting from Holden plant roof; and monitoring of water quality in the lakes.

Quiksilver Boardriders Club Coast Care Day, June 6, 2004

Thanks to the generosity of Quiksilver Boardriders Club, World Environment Day 2004 in St Kilda was the best on record. Quiksilver's \$10K contribution set the scene for a remarkable collaboration between community groups and government agencies to stage a mini coast care festival. The day was outstanding for three major reasons;

1. The powerful partnership of Quiksilver Boardriders Club, Landcare, Coast Action - Coast Care, Earthcare St Kilda Inc, Fishcare, Parks Victoria and Port Phillip EcoCentre Inc.
2. An extraordinary ratio of legends per hectare: VIPs at the event included Carolyn Briggs (Boonerwung Elder), John Thwaites (Minister for Environment), Wayne Lynch (Surf Champ), Nigel Muscroft (Quiksilver Boardriders Club), Dick Gross (Port Phillip Mayor), Carolyn Hutchens (Port Phillip Councillor), Rob Youl and Lea-Anne Bradley (Landcare luminaries), Julian Donlen (EcoCentre President), Sue Pennicuik and Jo Samuel-King (Earthcare Co-Presidents).
3. A glorious day weatherwise, as can be expected in the centre of the universe.

The cornerstone of the day were Earthcare's excellent longterm care for the around St Kilda Harbour environment. Several thousand foreshore-strollers were introduced to the mysteries of the marine scene; and at least two hundred were practically involved on the day. Activities included planting, natural history tours, spreading seaweed on the breakwater, pest seastar collection, touch tanks and displays at the rotunda; and at West Beach: planting, litter collection, weed control, stormwater quality analysis, and ecotours.

Roving performers 'Our Planet' drew colourful and quirky attention to the event calling on passers-by to join in. Participants were rewarded for their environmental action by music from the StarFish band and Geoffrey Barry's amazing organic soup (our answer to the traditional sausage sizzle).

The event was a dedicated 'disposable-plastic free zone; all plates, cups, forks etc being washed on-site thanks to the 'Wash Against Waste' trailer. The West Beach dunes received a gift of 2000 coast plants. Over 1600 voracious pest seastars were removed from the harbour.

Big Thanks

Robyn: for mapping all these activities and joining the dots so everyone knew what was happening where and when. Sian Meredith-Jones for coordinating general promotion of the event. Alex Edwards: a total team player. Monique and Jo: for the face-painting and the 'Kites for Kids'. Robby and Brian: for coordinating the small army of divers collecting North Pacific Seastars. Zoe and the penguin team: for sharing their knowledge of penguin real estate. Geoffrey, Peta, Toby, Jamie: for the food wrangling.

Andrew: for the stormwater quality monitoring. Julian and Sue: for being hands-on community ambassadors. Rosey, Vanessa, Karen and Anna from St Kilda Indigenous Nursery Coop, along with Rob and Richard from Naturelinks: shared their encyclopaedic knowledge of coast plants. Meyer: walked and talked visitors through a local natural history tour spanning 6000 years.

Maybe in another 6000 years time they'll still be talking about World Environment Day 2004!

N.E.D...

New Environmental Directions

The N.E.D. program involving seven clients from Central Bayside Disability Service was launched on Monday 16th August 2004 at the EcoCentre. This marked the official beginning of this partnership project that CBDS has developed with the Port Phillip EcoCentre to involve clients with a disability in various activities that have a positive environmental impact.

So far they have assisted with planting vegetables in the EcoCentre display garden, weeding, propagating seeds, cooking, yoga, learning about plants and animals, walking around the local gardens to observe flora and fauna, revegetation at St Kilda breakwater, weeding and planting at Westgate park and generally getting to know other EcoCentre users. The clients visit each Monday and now have an instructor with environmental skills working with them to develop this program. Kirsty Morphett began working for CBDS in this capacity in July.

This unique project began in April after Central Bayside Disability Service approached the EcoCentre to see if there were any opportunities for their clients with disabilities to participate in some positive way with this community venue. Staff and volunteers at the EcoCentre, primarily Geoff Barry and Neil Blake, were most welcoming and a weekly visit began in April.

All involved quickly realised this was something to nurture and formalise. Kirsty, an environmentalist, was engaged by CBDS to oversee the weekly program and support the clients in the various activities. Kirsty had the dual interest and personal skills to manage adults with disabilities to achieve positive results in their environmental work. New projects planned include a demonstration balcony garden, assisting with a bird-watching project, and ongoing revegetation work.

The launch of N.E.D. was attended by Dick Gross, the Mayor of Port Phillip, M.P. Tony Lupton, the State Minister for Prahran, Julian Donlen, the president of the EcoCentre committee, Neil Blake, Public Officer for EcoCentre, Geoff Barry, and several representatives from other environmental groups who came to show their support for N.E.D. The clients were enthusiastic, contributed to speeches made and most importantly enjoyed the afternoon tea that followed!

AFFILIATE GROUP REPORTS



B'nai B'rith Environment Group

Our major activity was our participation in the organisation of Melbourne's first Jewish eco-festival to coincide with Tu B'shvat in February. The Jewish Ecological Coalition (JECO) encouraged rabbis to incorporate in their sermons the Jewish perspective on the environment. On the Sunday some 500 people flocked to the Leo Baeck Centre in East Kew, where they could listen to talks by 15 speakers on various environmental issues, hear a panel of politicians debate strategies for improving Victoria's environment, and look at 22 display stands including a solar-powered car. Visitors were offered food and entertainment, the opportunity to plant trees, to see a video of JNF projects in Israel and to view the many posters submitted by children from several Jewish schools. JECO is planning to hold another such festival in May next year.

Other activities undertaken by BBEG during the year included the planting of some 850 trees in Wonga Park in August and again in June at Braeside.

In November members and friends of BBEG planted reeds in the waste-water overflow garden of the EcoCentre, part of the waste-water treatment system for which we had donated \$4,000 which is acknowledged on a sponsors' board in the house.

To encourage membership of our own group, we have emulated ADC in offering to Jews, who are not already members of B'nai B'rith, supporting membership of BBEG for an annual fee of \$60.

Finally we continue our efforts to reduce waste by encouraging the recycling of spectacles, hearing aids, wool, corks and mobile phones. We are told that the life of a mobile phone is about 7 years, yet Australians exchange their phones on average every 18 – 24 months. Consequently it is estimated that there are some 10 million unused phones lying around in homes and offices or worse, being sent to landfill where their extremely toxic materials can leach into our environment. BBEG raises funds from the collection of corks (\$1 per kilo) and re-usable phones (\$3 each) but more importantly, recycling raises the image of B'nai B'rith by showing that our organization is concerned about matters affecting the wider community.

Dennis Nassau

Port Phillip Bug

Is a newly incorporated bicycle user group that looks after cyclists needs in the Port Phillip area.

We organise rides and lobby council for infrastructure and support. We had a recent victory on Beach road where we lobbied council for commuting and training cyclists to have safer use of beach road. The result was the installation of a wide bicycle lane.

We are currently assisting council in the Foreshore management Draft plan in relation to cycle paths.

Convenor

Glenn Bermingham
0416 278 044

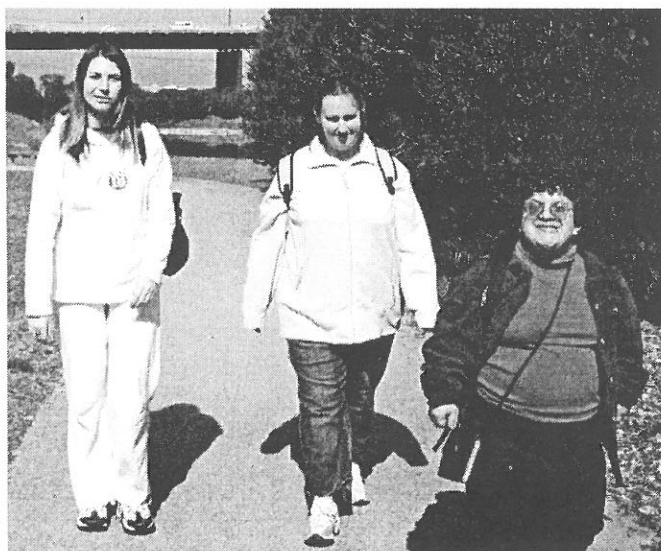
By establishing this 12 month pilot project, the EcoCentre has demonstrated commitment to be inclusive of all members of the community. We hope this project can be used as a model for other partnerships in the broader community to be established involving people with special needs contributing positively to the environments they live in.

Vicki Black

Building Partnerships
Central Bayside Disability Service



David and James at EcoHouse



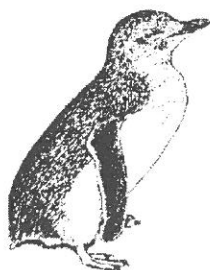
Stephanie, Tabitha and Jacque at Westgate Park.

Earthcare St Kilda Inc.

It's been another busy year for Earthcare, continuing with our well known projects – the Little Penguin study, indigenous plantings and sea star removal – and starting up some new ones – rakali watch, Port Phillip Nature Watch and preparing a submission on the channel deepening proposal. As always, Earthcare activities are carried out by enthusiastic and dedicated volunteers. Thanks to everyone.

The Earthcare Committee for 2004/05 is Co Presidents - Sue Pennicuik and Jo Samuel King, Vice President - Andrew McCutcheon, Secretary - Zoe Hogg, Treasurer - Angela Suter, and Committee members, Alison Strachan; Rob Scott; Joe Malignaggi; Robyn Mitchell, Alison and Bob

Little Penguins on St Kilda Breakwater



The study of the Little Penguin colony on the St Kilda Breakwater is now in its 18th year. We thank Toyota for funds to supply microchips. A report on the Little Penguins has been released on CD. Following is an edited extract of the report by Zoe M Hogg © Earthcare St Kilda Inc.

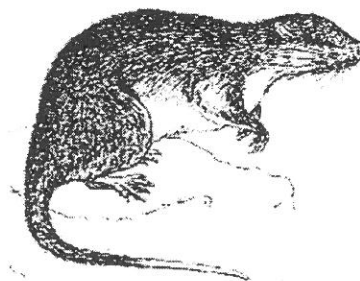
The report details the number and distribution of penguin sightings since the reconstruction of the St. Kilda Breakwater in June 1998; the number and distribution of breeding sites since reconstruction; and estimates of penguin population.

The Little Penguin population has grown steadily during these years with a large recruitment during the 2003/4 season. In 1998, the population was estimated at 346 at 71 breeding sites. In 2003/04 there are 112 sites and an estimated 520 birds. Many penguins stay around the same site all their recorded life. Of the longest resident penguins still on the breakwater and caught regularly 3 are male and 1 is female.

The increased vegetation on the Breakwater has created more, safe breeding sites and the penguins have now colonised sites along the whole length of the breakwater, in contrast to the previous dispersed pattern of burrows. The increased vegetation has had a marked effect on the choice of burrow location with penguins choosing to live among the *Atriplex cinerea* bushes.

The Breakwater is marked every 10 metres and has an alphabet marker every 20 metres, to find reference points for penguin survey participants. Made from recycled plastic, they are low maintenance, long lasting, rot and vandal resistant, and we expect that they will last a long time.

Rakali Watch



Rakali (*Hydromys chrysogaster*) are native water rats common to most coastal areas in Australia.

A group of dedicated volunteers have observed the local rakali population, fortnightly on Wednesday evenings since June 2003, to extend upon previous rakali research conducted by Earthcare. The aim is to determine the rakali distribution and density in the area, as well as making behavioural observations.

Most observation sessions run for just over one hour and are held just after sunset, using torches to follow rakali movements. Volunteers record sightings of rakali, noting the time, location, distinguishing features, activity, food and interactions with other animals (intraspecific and extraspecific).

Three sites have been surveyed – St. Kilda Pier, Albert Park Lake and Elwood Canal. Rakali have been observed at all three sites, although they appear to be absent from particular locations within some of these sites.

Many thanks to Tiana for collating the rakali observations, which are included on the Little Penguin CD, and to Bob and Alison who are now coordinating the fortnightly rakali watch.

Port Phillip Nature Watch

Port Phillip Nature Watch (PPNW), an important new activity for Earthcare, has now been operating for more than a year. All members of Earthcare and other local environmental groups can participate at any time in recording interesting or unusual sightings of wildlife within the City of Port Phillip.

Thanks to Andrew McCutcheon for initiating and coordinating PPNW. Hopefully, as more people get to know about PPNW we will get a lot more responses – there is a lot more out there to see and record. Andrew would also be interested in receiving lists of bird and animal species you regularly see in your back yard or local area. If you have any Port Phillip sightings to report, or any questions please contact Andrew on 9531 2270, or email amccutcheon@melb.globaldial.com

World Environment / Quiksilver Boardriders Club, Coast Care Day

On Sunday, 6th June, through the combined forces of Quiksilver, Coast Action - Coast Care, Port Phillip EcoCentre Inc, Landcare, Fishcare and Earthcare, the first St Kilda based Coast Care Day took place.

On St Kilda Pier, a dedicated band of sixteen divers (1 Earthcare, 2 Melbourne Aquarium and 13 Diving Headquarters Dive Club), watched by many interested onlookers, braved the chilly 12 degree water temperature for thirty minutes in search of Northern Pacific Seastars.

The divers hauled in 20 bags containing 1,614 or nearly 185 kilograms of seastars – this almost filled two green wheelie bins. A team of volunteers counted and sorted them by size and weight. Deputy premier and state Environment Minister, John Thwaites called in for a moment to watch proceedings. The most numerous seastars were those measuring 11 to 15cm (531), followed by 6 to 10 cm (491) and 16 to 20 cm (400). There were also 108 monsters – over 21cm.

At West Beach, there was indigenous planting, kite flying, face painting, good things to eat and a 'litter display'. Many thanks to Robyn, Neil, Robby, Alison (at the rotunda), Monique and Alex for the huge effort in coordinating the day, to Geoffrey for the fabulous food, and to everyone else who helped out.

Hopefully, this will become a regular, if not annual, event.

Proposed Channel Deepening

Earthcare has taken a strong interest in the proposed deepening of the Great Shipping Channel by the Port of Melbourne Corporation (PoMC) and we have major concerns about the potentially significant, adverse impacts of the proposed channel deepening, particularly on the Little Penguin colony on St. Kilda Breakwater, the sea grass beds and water quality in St Kilda Harbour and the ecology of Port Phillip Bay in general.

Earthcare has made a submission to the Panel, which has been set up to review public comment on the EES, which was released on 5 July. The submission is available on the Earthcare website.

Garden of Eden Inc.

At Garden of Eden in the past twelve months there have been many more exciting projects developing, as more and more members of the community become involved.

This year has seen Garden of Eden work with communities of the North Melbourne, Inkerman and Bunle Street Public Housing estates in the construction of community gardens. Now we are also with Maribyrnong City Council and Braybrook Community Centre to construct a new community garden in Braybrook. This project will incorporate a Work for the Dole and horticultural training program, and also involve local volunteers to include their unique garden and arts skills.

The Garden of Eden project and Garden of Eden Nursery recently exhibited at the International Health Conference held in April at the

World Trade Centre. Project Co-ordinator Elyse Rider and patron to the Garden of Eden, actress Helen Noonan worked with staff and volunteers to create a beautiful display showcasing the beauty and merit of organic gardening for the health of people and the earth.

Developments on site at the Garden of Eden in South Melbourne include plans to renovate the entire front entrance according to permaculture design principles with the assistance of Garden of Eden staff, family members, Work for the Dole participants and volunteers. A propagation greenhouse is also planned for Spring, which will enable the community garden to grow a number of native and vegetable species for distribution to local garden networks. The Garden of Eden Nursery will also make use of the greenhouse to grow heirloom vegetable seedlings, and be able to offer a range of unusual varieties for home consumption. Saving Seed at the Garden of Eden is also an important aspect of permaculture and sustainability. We have set up a seed-saving system and will in future be able to distribute seed to other community gardens in and around Melbourne, and also return seed to the Seed Savers Network in Byron.

Next year we will be commencing a garden project with the Department of Veteran's Affairs to upgrade and modify the garden's of Veteran's so they are user friendly, low maintenance, and herb and salad producing garden's.

Well done everyone for a great year and thank you EcoCentre for your on going support. It is great to know you are there.

Friends of Port Melbourne's Foreshore

The Friends of Port Melbourne's Foreshore has focused its efforts on Perce White Reserve. Its a small Reserve, with lots of complex issues which also happens to be rich in biodiversity.

Management of the site improved throughout the year.

Construction of the new Life Saving Headquarters in the Reserve will probably begin later this year. We have yet to meet with Spotless, the newly appointed contractors for the natural heritage/indigenous areas of Port Phillip.

We thank Neil for his ability to generate energy and enthusiasm and support for projects relating to the conservation of biodiversity in Port Phillip.

Friends of Westgate Park

Another year gone by, and another spring full of the scent and colours of wildflowers, and the sounds of frog and bird calls against the hum of the Westgate Bridge is on it's way.

We have been very lucky this year with a Work for the Dole crew of up to 9 people working 2 days a week in the park. This crew's fabulous work have enabled the Westgate Park project to move

AFFILIATE GROUP REPORTS

forward rapidly. In the past year the Friends and team have planted around 9,000 plants and moved at least 100 truckloads of mulch. George, the solo sprayer, has kept our areas maintained so that they are virtually weed free.

Despite all this work, we have not accomplished any major projects this year but have worked diligently on consolidating and extending our existing areas. Although we can never say that any of the ecosystems we have created are 'complete', we are starting to see real change from plantings to functional ecosystems which are virtually self-maintaining. Through linking up and planting understorey species we are finding that areas are settling into the landscape, and we are looking forward to watching these areas flourish.

Our project for the next year should complete the northern side of the park. We have planned a Red Gum Woodland area which will feature many billabongs and ponds. These will create a 'chain of ponds' between the dam in the heathland and the larger dam which is connected to the lake.

At the moment the dams have begun to bok and bop, creek and croak with the sounds of Common Froglets and Spotted Marsh Frogs. The dragonflies have hatched and can be found flying all around the Park. Many of the wattles have bloomed and the entire park is buzzing with the promise of a spring and summer abundant with life. We just hope that this year's rainfall is better than the last, for with that our summer work of carrying water to all of our new plantings will be minimized.

We would like to thank the EcoCentre, Landcare and Holden for their generous support and their involvement in our projects. We feel privileged to have gained this invaluable assistance towards creating the park into a functional and diverse ecosystem.

Although we are fortunate to have varied and consistent support from the community, the Friends of Westgate Park are always in need of more help. (it is a park of almost 60 hectares after all!) If you would like to be involved please come down for our Friends days – the 3rd Sunday of every month, or call George on 9428 4820 or Naomie on 0415 941 629 or gnomie@labyrinth.net.au.

Lentil AS Anything

41 Blessington St. St. Kilda 3182 ph: 9534 5833
LENTILASANYTHING@HOTMAIL.COM

"Lentil as Anything" is many things. It is a café which provides quality organic vegetarian food. There is no set price. People pay what they feel is fair. This philosophy has attracted a whole range of people: artists, the disadvantaged, those interested in alternative ideas, those drawn to care for the community they live in. You may be aware how state, national and even international newspapers, magazines, radio and television have reported on Lentil and it's organic philosophy.

The menu ranges from round the world delightful curries to five star chef cooked Japanese dishes (a few nights a week) and speciality of the house Sri Lankan hand made sambals.

Many of Lentil's clients are the homeless, street workers, drug addicts and those with mental health issues. Lentil has been supporting these people with food, shelter and a healthy and creative social environment without any funding. Lentil has been operating for almost three years with the support of volunteers and individuals who give generously.

Lentil is also a highly engaging psychic and creative space, which attracts artists from all over Melbourne. Much of the people involved with Lentil are practicing professional artists. The place itself has generated many projects and collaborations.

This year a new Lentil as Anything opened at Belgrave, following the same philosophy and concepts originated in the one in St. Kilda.

Examples of Artistic Ventures Connected with Lentil

Lentil Bash: is a free and open to everybody cultural gathering happening the third Thursday of every month, which emphasis is collaborations between participants. Artists in realms of music, dance, theatre, comedy, spoken word and film perform works together. We are looking for the development of new professional work, which break the boundaries between expressive mediums and the roll of participant/spectator. Lentil is an unusual place. We encourage unusual artistic explorations and ventures.

For one and a half years, Lentil as Anything has facilitated a monthly poetry reading. These events generated substantial attendance and positive feedback. Since May 2003 this event evolved into the City of Port Philip supported "Lentil Bash", including poetry but piggy backing off the rhythm and energy of a full range of other art forms. Many possible directions open to spark the imagination of local and visiting artists. We like experimenting with the format and mixing of artistic genres. We encourage horizontal collaborations, where participants (that is performers and audience), create a unique cultural expression, celebrating our community and its diversity.

Lentil Republic is a monthly magazine which started this year from what the editors would like to call a spontaneous combustion of energy. A submission box was placed in the café and each edition is put out with a print run of 400. The editorial policy is not to edit. To allow all voices to have full reign. It also includes information relevant to disadvantaged groups: accommodation, food, health services etc. We are working with the outreach team of the Psychiatric Services division of the Alfred Hospital. They have shown a lot of positive interest in the work we have been doing. Many of their clients are our customers.

The Dreams of the Chicken, absurd theatre/cabaret show has an all Lentil cast and crew. Had performed at Sydney & Melbourne "Big Day Out", Sydney Mu Mason Archives, Canberra State Library (invited by the Argentinean Embassy), "Melbourne Fringe" 2002 and soon to perform in the 2003 version.

Refugees The Musical, is a comedy show which has an all Lentil cast and crew. Many of the ideas were workshopped at Lentil. The show was part of the last Melbourne Comedy Festival, and will be at the upcoming Melbourne Fringe Festival.

The Rush Effect is a band that has been playing weekly. It has about 6 members. All of these musicians met at Lentil and continue to do so. The band started playing together at Lentil's early poetry nights.

Spontaneous eruptions of creativity which include musical jamming, poetry in the window and writing in Lentil's journal. Visual art from local painters, photographers and craft people is exhibited on the wall. Artists can choose to offer their work for sale (without commission charged).

Lentil's Sponsorship and Support

Lentil has offered sponsorship in the form of either food or money to different gatherings and organisations. Examples include: Mayhem Cabaret (held at Theatreworks and West St Kilda RSL) and "In the Realm of the Senses", a film festival held in the Catanny gardens and Revolver Upstairs. Lentil has also had stores at Confest, the St Kilda festival and a Global dance festival held at Gasworks.

Park Community Association Inc.

President's Report – 2002/03

It has been another very good year for the Association. The emphasis has been on propagating and planting and we can be very satisfied with the results. We started the year with a most successful National Tree Planting Day in July 2002, attracting more than 120 people and planting more than 4000 plants. The same event for the current year was even more successful, indicating the continuing strength of interest in the project and in community planting projects in general.

Overall, we propagated more than 25 000 plants and planted out 23 000. In the process we set up the final framework of all the areas to be planted, bringing the end of the planting phase of the project clearly into view. We were pleased to have raised the interest of a number of industry groups to help us in this work, including the ANZ Bank, the National Australia Bank and the Sustainable Energy Association of Victoria. We also received advice, guidance and facilities from organisations such as Tree Project, Naturelinks, the St Kilda Indigenous Nursery Co-operative, Parks Victoria and Greening Australia. Among the many hundreds of helpers it was a great pleasure to work with groups of students from the St Kilda Park Primary School, and Melbourne University Private.

As an organisation we contributed to community activities such as the City of Port Phillip Global Garden Party and Parks Victoria's clean up of the lake.

Once again Parks Victoria supported the project financially and physically and we were most grateful to General Motors Holden for funding the purchase of a purpose-built trailer. Owning our own trailer not only saves a substantial sum in hire costs but it is immensely practical. It enables us to store our tools and equipment permanently under the false floor, overcoming many of the logistical difficulties of getting equipment and plants to the site on planting days.

Although we made great progress on the planting side, we suffered significant losses due to the drought, despite the efforts of a dedicated team of hand-waterers. We also have been unable, so far, to attract the funds needed to complete the second major feature of the project – the Small Meeting Place.

Where to now? There is little doubt that we will finish the major planting phase of the project by December 2003, leaving only the residual in-fill planting to be done. We have the resources available to resurface and 'soften' the last of the walking paths and we will continue to pursue the funds necessary for the second Meeting Place, thus maintaining the momentum of the project until all aspects of the work are complete.

Thanks to all those who have given so willingly of their time, advice and physical help. The project has shown once again the strength of the community in working together in a good cause.

John Addie
President
20 August 2003

Ragged Trouser Theatre

Ragged Trouser Theatre is proud to be involved with such a model of good citizenship and community leadership as the Ecocentre. We will be using the facilities to present community theatre, giving a voice to people who are socially excluded and providing entertainment based on community involvement. Theatre is about communication – and the more personal the communication, and the less institutional, the more effective it is. The Ecocentre is a perfect place to perform right in the middle of a model of sustainable living. Three cheers !

SKINC Report 2003/2004

St.Kilda Indigenous Nursery Co-operative continues to grow and promote the use of indigenous plants within the City of Port Phillip and beyond whilst providing some employment to its members. We do this via three different areas of the Co-op; the nursery, landscape and education.

During the last financial year the nursery supplied the City of Port Phillip with the annual 25,000 plants and other orders including plants for Westgate Park, various revegetators, schools, councils and

AFFILIATE GROUP REPORTS

organisations such as Parks Victoria, the Melbourne Museum and The Royal Botanic Gardens Melbourne.

One rather large order was from Spotless for along the Port Melbourne lightrail, which was great for the nursery.

Volunteers are an important part of the nursery's day-to-day activities. This year was no exception, with many new volunteers and some regulars staying on with us. Volunteer management is quite time consuming, the nursery management committee is continually reassessing and learning new management skills in this area.

Sales within retail division of the nursery continue to grow as we learn to improve our marketing techniques, including planning and retail display.

Due to finite space at the Port Melbourne site, which limits the amount of plants we can grow, site plans are underway to improve the use of space and hopefully the number of plants we can sell.

The Co-op has been under quite a lot of financial stress over the past year. This is due to a number of factors, one of which is increasing competition in the wholesale area of the nursery. Western Plains Flora has spent half a million dollars on extending their nursery, we now compete with what feels like big business, making it hard to achieve one of our objectives which is to offer employment to members and to increase current employment opportunities.

But with the bad comes the good. Due to these pressures we have had to look at improving our business. We are currently reassessing our objectives, management practises and developing our strategic planning. Hopefully this will strengthen the co-op and enable a productive and long future.

The landscape section of the co-op has grown over the past year. This provides employment opportunities to a few members and provides the public with an alternative to the usual home garden landscaping.

We have also begun to develop our links with organisations such as the Garden of Eden, Bayside Community Nursery and of course The Eco-Centre that we look forward to increasing.

Overall it's been an interesting and challenging year for SKINC, which we are sure will lead us to positive changes and growth in the future.

Anna Whitelaw
Director

St Kilda Community Gardens Club

St Kilda Community Gardens Club was established in 1980. It is located close to the Balaclava train station and this year our members have participated in Earthcare's planting of trees, bushes and groundcover on the train embankment (M>Train does a poor job). Thanks to a grant from Port Phillip Council we bought a lawnmower and no longer have to pay for the mowing of paths and the BBQ area. We have 26 people on the waiting list. Our club has 24

plots, and only one plot becomes vacant each year. Hence there is a huge unmet demand for community gardens in Port Phillip.

CAAM

The CAAM (Community Access to Air Monitoring) programme originally started under the auspices of the EPA in 2000 & a core team of roughly 8 people learnt how to manually run the air monitoring station at Brighton on a weekly basis. Other teams operated out of Alphington & Dandenong but the others were not nearly as active as ours was for over 2 years. We had annual Open Day at the Brighton Station run in conjunction with the Clean Up Australia Day weekend & usually had a presence at the various local fairs & environmental events. Another aspect we engaged in was giving air quality awareness lectures to various community & U3A groups.

In 2002 the EPA effectively discharged their association with us & since then we have continued under the Ecocentre umbrella. However many of the original

team have in the past year found other commitments & we no longer have an active station monitoring roster in place nor have we given any community lectures.

Last but not least we have also lost Ruth, our main energiser.

I believe we still would like to continue in our educational & awareness role & would welcome expressions of interest from anyone as to how we might continue in the future.

Contact Nicki on 95278834 to register your interest.

Veg Out Community Gardens St Kilda Inc.

Veg Out continues to grow

It has been another big year at Veg Out Community Garden. Our members and friends have been busy growing vegetables and flowers, preparing the compost, undertaking maintenance of the gardens, and propagating seedlings in the glasshouse.

Last February saw the launch of the Veg Out St Kilda Farmers Market. Held on the fourth Saturday of each month at the Peanut Farm, the market sells fresh organic fruit and vegetables, gourmet cheeses, organic meats, free-range eggs, and delicious seasonal delicacies. Since its inception, the market has gone from strength to strength, becoming a regular outing for more and more members of the local community.

Veg Out has also teamed up with South East Water aiming to reduce water use and provide a means of educating the community in methods of saving water in our gardens. Two large tanks have been installed, collecting the rainwater from the roofs of the gardens' buildings. Additionally, a mural competition is being held,

with primary and secondary schools invited to design a mural showing ways that water may be saved. The winning design will be painted at Veg Out.

A new garden plot in the shape of a pirate ship was "launched" in July as the first in the "positive plot" programme of People Living with HIV/AIDS, to encourage positive persons to interact with their community and have a happier and healthier life.

The gardens themselves have been further enhanced with the revamp of the cactus garden, the new fern gully, sunflower mural, and the paving of the Chaucer Street entrance, which includes a new herb bed.

Another landmark for the year was the inaugural Veg Out vintage, a white wine made from the gardens' vines.

Veg Out held its regular calendar of events: the Jumble Sale in August; Open Day in October; Carrots By Candlelight in December; the "Batting for the Battlers Veg Out vs. the Vineyard" cricket match; which this year raised just under \$20,000 for the Sacred Heart Mission; and the Easter Sunday Egg Hunt and BBQ. Additionally, Veg Out held stalls at the Jackson Street Festival in November, the Sustainable Living Festival in February, and the Global Garden Party in March.

A Work for the Dole scheme in autumn commenced work on a raised garden bed project, shortly to be completed.

On a formal note, earlier this year Veg Out became registered as an incorporated association and therefore now has a separate legal existence. We regard this step as reflection of members' aspiration to become a lasting part of the St Kilda community.

One of Veg Out's exciting achievements over the last 12 months has been our involvement in organising the Veg Out Farmers Market, held on the 4th Saturday of the month at the Peanut Farm Reserve (behind Veg Out). The market provides an opportunity for locals to buy fresh produce directly from the farmers/producers.

Other highlights include: the completion of the mosaic pathways, also providing wheelchair access for our newly created raised garden beds, and the donation of a rain water tank from South East Water.

Things to look forward to over the next 12 mths at Veg Out include our '2nd Veg Out Vintage', wine made from our very own grapes with the help of Red Rock Winery. Spring is particularly beautiful for colorful flowers in the garden, however for the latest information on what's on at Veg Out, visit our website:

www.vegout.asn.au

Water Quality

An 18 month study of the water quality at the entrance of the Cowderoy Sreet Creek drainage to the bay opposite the penguins' home on the breakwater is in the final stages of being written up

by Gavin Parker who, as a trade-in for his help, used some of the data collected to incorporate into his degree dissertation on the St Kilda Harbour & the environmental impact of the proposed marina.

The weekly testing was discontinued in December 2003 but monthly testing in conjunction with the SLAH programme started in June 2004 & will run until November 2004. People involved have included Bill, Eva, Joan, Sarah, Claire & Gavin all of whom fronted up to test in rain, hail or shine.

The parameters covered include pH, salinity, nutrient & oxygen levels, temperature & notes were made on rubbish & weather details also. Special thanks to Claire & Gavin who have contributed greatly to the write up & presentation of the collected data.

Contact Nicki or the Port Phillip SLAH programme for ongoing water testing details.

Green Mums Group

The Green Mums group was initiated in early 2004 by the EcoCentre/ Earthcare's stalwart Dr Josephine Samuel-King and Earthcare's Alison Strachan. It was proposed as an opportunity to meet with other parents of pre-school aged children with an environmental outlook on life, while encouraging our children to play in the relaxed and friendly place that is the EcoCentre. Despite our 'Green Mums' name we hope to attract like-minded fathers and grandparents to join our group.

The green mums group is a group for carers of predominantly pre-school aged children who care about the environment, sustainability and solving parenting issues in an caring 'eco-friendly' manner. As a group we hope to achieve many appropriate goals, our first major project involves completing the childrens play area between the EcoCentre and veggie garden. To make this area a delight for younger children, stimulating play and imagination. We also plan to facilitate creative workshops for children to increase the EcoCentre's profile and usage and our own groups network.

So far we have we attracted 12 parents to our group but hope to expand further in the following year.

Education program

The range of curriculum-based activities developed and delivered for schools in 2004 will expand additional schools respond to promotion. The EcoCentre's local environment network is a key strength for developing and maintaining relationships with schools.

Engage with St Kilda Botanical Gardens visitors

Visitors to St Kilda Botanical Gardens visitors expect to find information and amenities at the EcoCentre. Provision of visitor services and activities fosters community support, memberships, project participants, and promotion of sustainable living to the wider community.

Initiatives to create links within the broader region

The Superb Fairy-Wren regional survey, launched in November 2004 provides scope to engage with community environment groups active in the neighbouring Cites of Hobson's Bay, Melbourne, and Bayside. The Superb Fairy-Wren web page invites community involvement in surveys to potentially inform management of coastal habitats.

Continue existing programs partnerships

EcoHouse tours continue to draw interest from the general public local government agencies and educational institutions, providing ongoing exposure to our sponsors.

Ongoing monitoring and evaluation of the EcoHouse's wastewater re-use system in partnership with South East Water remains a priority.

The established relationship with Landcare Australia has been a key link to corporate support for projects which protect biodiversity and raise community awareness of regional ecosystem issues.

Coordination of production and distribution of 'Indigenous Plants of the Sandbelt' for Earthcare resulted in all copies of the first print run being sold by September 2004. At the time of writing arrangements are in train for a reprint.

New partnerships and projects

Forging stronger links with the local indigenous community is a primary objective.

Recent approaches from corporate bodies involved in marketing and distribution of water conservation products and energy efficiency programs have the potential to become exciting new partnerships in 2005. Wherever possible, opportunities will be sought to link project outcomes to the goals of the City of Port Phillip, our major sponsor.

Geoffrey Barry

Despite his misguided allegiance to a certain black and white footy team, Geoffrey continually kicks goals for the EcoCentre. He has forged a diverse range of endeavours that give great substance and benefit to the EcoCentre and wider community.

His 'plot to plate' concept, combining organic food-growing with nutritional education and cooking skills, is already a cornerstone of the EcoCentre's sustainable education programs.

As a result of his commitment to natural justice for the disabled, he initiated the 'New Environment Directions' program, which integrates participants with our affiliates environmental activities. The NED team floods the centre with vitality and goodwill.

Geoffrey has contributed enormously to the growth of the organization through his contributions as a committee member. His committee portfolios include the 'Work for the Dole' program involving ongoing liaison with Kangan Batman TAFE, the program participants and supervisor.

Meanwhile, in his spare time, he's played a key role in establishing communications and financial tracking systems to meet the demands of our expanding operations. Along with his sense of humour, Geoffrey has a natural talent for robust debate. Even his attitude has attitude! His defining characteristic is his will to turn talk into actions.

Michele Hodes

Michele is one of those rare people who manage to combine a sunny disposition and natural generosity of spirit with an ability to count money! Calm and seemingly unflappable, her expertise as Treasurer is matched only by her propensity to have babies.

Over the past 3 years, her major achievements (apart from the aforementioned babies) have been to successfully meet the demands of the Australian Tax Office and accurately track the EcoHouse project income and expenses. Consequently, the EcoCentre is highly regarded for its ability to manage funds appropriately and is seen as a reliable partner by sponsor organisations.

But Michele's contributions go well beyond fiscal duties. Her good humour and solutions-based outlook are invaluable whenever organizational policy issues need to be talked through. Her positive approach and happy knack of complimenting fellow team members on their efforts encourages us all.

Management Committee 2003-04

Julian Donlen, President
Steve Pennells, Vice President
David Giles, Secretary
Michele Hodes, Treasurer
Josephine Samuel-King
Geoffrey Barry
Tony Gardner
Neil Blake, Public Officer

EcoCentre Public Fund Managers

Josephine Samuel-King
Kay McKenzie
Louise Kyle

Affiliate Groups

B'nai B'rith Environment Group
Community Air Monitoring
Earthcare St Kilda
Friends of Port Melbourne's Foreshore
Friends of St Kilda Botanical Gardens
Friends of Westgate Park
Garden of Eden
Park Community Association
Port Phillip Bicycle Users Group
Quollity LETS
St Kilda Community Gardens Club
St Kilda Indigenous Nursery Cooperative
St Kilda Organic Food Cooperative
Ragged Trouser Theatre
Veg Out Community Artists Garden

Website & Info Systems support

Alison Strachan
David Giles
Marko Mijic
Rob Rowe
Steve Ram

Project Staff

Alice Molan (Westgate Frogs Project Facilitator)
Naomie Sunner, Liz Rule (Work for the Dole Supervisors)

Port Phillip EcoCentre Inc.

55A Blessington St,

St. Kilda VIC 3182

Tel: (03) 9534 0670

Fax: (03) 9525 3312

Email: ecocentre@iinet.net.au

Internet: www.ecocentre.com

ABN: 66 852 809 680

Incorporated Association No. A0038897K

Registered on Environment Australia's Register of Environmental Organisations

Port Phillip EcoCentre Inc. is a Waste-Wise Organisation

local ACTION global FUTURE